



Greenland Business Association

# In Brief



Sulisitsisut  
Grønlands Erhverv  
Greenland Business Association



# We not only take part in the development. We help create it

The Greenland Business Association (GBA) is Greenland's strongest business and employer organization. We represent the vast majority of companies and most of the country's business turnover in the private sector. This ensures GBA has a central position in the labor market and in relation to the country's authorities and political leadership.

GBA has all of Greenland as its workplace, with the clear purpose of creating the best possible framework for business. This means that membership in GBA is key to influencing business development and direct access to a collegial community that provides strength.

The GBA secretariat advises and guides member companies on small practical issues or problems of a more demanding legal nature.

GBA organizes courses, conferences, information activities, study trips, and trade promotion abroad.

## **GBA – at the Forefront of Development**

GBA has been representing the interests of the business community since 1966. Almost 330 companies across all business sectors in the country are members of GBA. From small and medium-sized companies to large corporations operating in international markets.

## **GBA's Vision and Mission**

GBA will take a leading role in shaping an economically strong Greenland. We create business policy results and sustainable business development based on economic and social growth. We work for growth, take the initiative, and are not spectators to the development but take active responsibility for Greenland's journey as a society and democracy. We are the voice of civil society in developing business framework conditions.

## **Greenland's Business Community**

Greenland is always in a state of rapid development. This development places demands on the business community. The green transition and focus on sustainability present Greenland and the country's business community with new challenges and, through this, new opportunities for development and growth.

# GBA's Four Focus Areas

## Interest Organization

As an interest organization, GBA works through dialogue with the political system to create the best possible framework for the business community.

This is based on GBA's business policy action plan and is in close dialogue with the public authorities at the Government of Greenland and the five municipalities.

GBA is represented in approximately 20 permanent councils, committees and boards under the Government of Greenland, and GBA is a consultation party in the Government of Greenland's legislative preparatory work.

## Service Organization

As a service organization, GBA provides legal advice to member companies. GBA prepares industry-oriented statistical information and guidance material for relevant legislation as needed.

## Business Development

GBA is active in business development within existing and new industries, such as mineral exploration, mining, tourism, and the production of Greenlandic food.

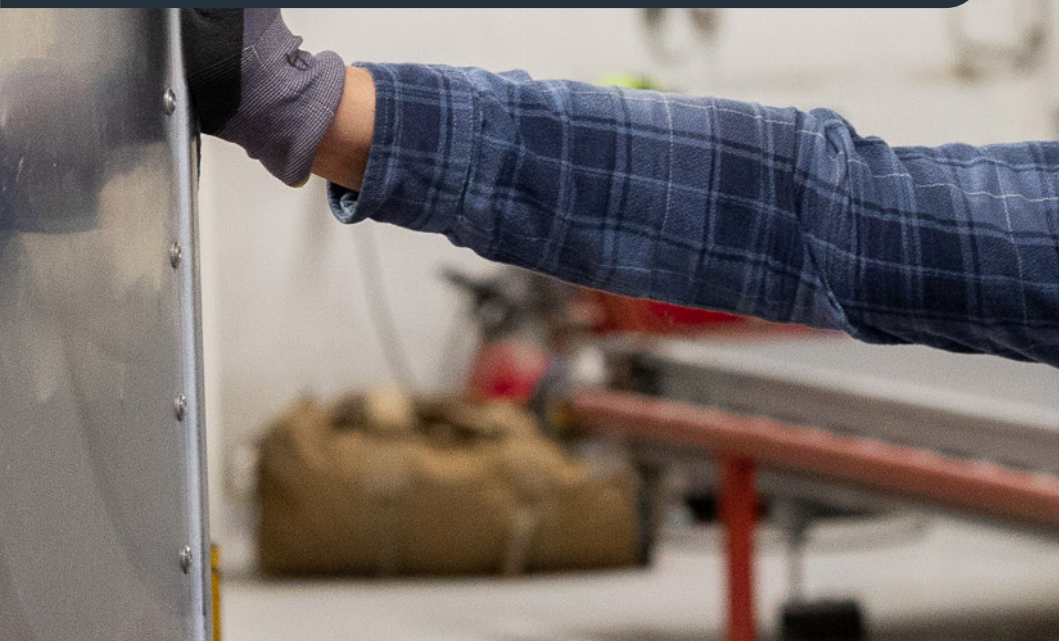
GBA works to collect and anchor knowledge, establish networks, and establish international contacts with experienced professionals and companies. This ensures that Greenlandic companies are optimally prepared for future requirements.

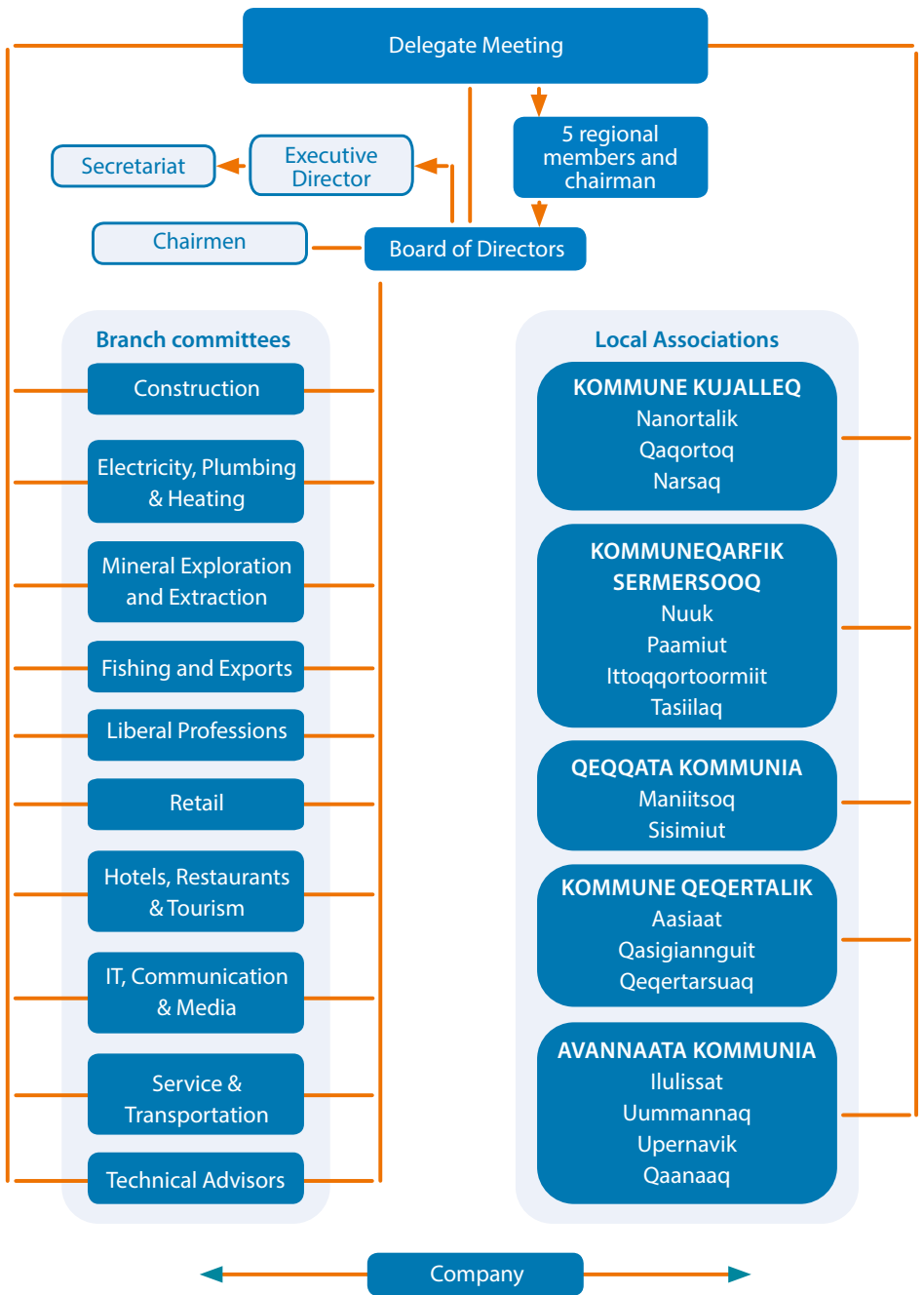
## Employer Organization

As an employer organization, GBA helps ensure orderly labor market conditions. This is done through a main agreement and three collective agreements with the trade union SIK.

The agreements cover the production and construction sectors, trade and office sectors, and transport and service industries.

GBA also has a main agreement and a collective agreement for banking with Finansforbundet in Denmark.





# Subscription Structure

A payroll-dependent membership fee is paid on payrolls up to DKK 113.5 million until December 31, 2024. Hereafter, it will be regulated according to the consumer price index.

## GBA's National and International Networks

GBA has a nationwide network that also includes partners from outside Greenland. This secures optimal and up-to-date service and advice for member companies.

GBA's partners in Denmark are DI Byggeri (the Danish Construction Association), Dansk Erhverv (the Danish Chamber of Commerce), Dansk Industri (the Confederation of Danish Industries), Danish Seafood Association, Tekniq (the Danish Mechanical and Electrical Contractors' Association) and HORESTA (the Danish Hotel, Restaurant and Tourism Association).

GBA is a member of the following international organizations and networks: the Prospectors & Developers Association of Canada (PDAC), which holds the world's largest annual trade fair for the mineral exploration and development industry; MSC Fisheries, which works to secure sustainable fishing; and the Greenlandic-Icelandic Chamber of Commerce.

## CSR Greenland

CSR Greenland is an independent association that works with corporate social responsibility. CSR Greenland secretariat is located in GBA's house in Nuuk.



DANSK  
ERHVERV

HORESTA



TEKNIQ

Subscription structure per Q2 2023

| INDUSTRY                             | Basic fee<br>– quarterly (DKK) | Salary dependent fee:<br>Above 1 mill. DKK per year |
|--------------------------------------|--------------------------------|---|
| Construction *                       | 1,500                          | 0,5%  |
| Electricity, plumbing and heating ** | 1,500                          | 0,5%  |
| Mining*                              | 1,500                          | 0,5%  |
| Technical consultants*               | 1,500                          | 0,5%  |
| Hotel, Restaurant and Tourism ***    | 1,500                          | 0,5%  |
| Self-employed professionals          | 1,500                          | 0,5%  |
| IT, communication and media          | 1,500                          | 0,5%  |
| Service and Transport                | 1,500                          | 0,5%  |
| Fisheries and export industries      | 1,500                          | 0,5%  |
| Retail trade                         | 1,500                          | 0,5%  |

\* Optional membership of "Dansk Industri" (DK)

\*\* Optional membership of "Tekniq" (DK)

\*\*\* Mandatory membership of "HORESTA" (DK)

A payroll-dependent membership fee is paid on payrolls up to DKK 113.5 million until December 31, 2024. Hereafter, it will be regulated according to the consumer price index.

## Associated Membership

Per quarter DKK 2.500

GBA can accept both domestic and foreign organizations and foreign companies. These are recorded only as ancillary to the main association and have no voting rights at any elections, polls, resolutions, etc., under GBA's auspices.

The basic fee for domestic and foreign organizations and foreign companies is set at DKKK 2,500 per quarter. There shall be no salary-dependent subscription.



GBA's Secretariat in Nuuk:  
**Greenland Business  
Association**  
PO Box 73  
Jens Kreutzmanipp Aqq 3.  
3900 Nuuk - Greenland  
+299 32 15 00  
[www.sulisitsisut.gl](http://www.sulisitsisut.gl)  
[ga@ga.gl](mailto:ga@ga.gl)



Writes consultation responses to new legislation, etc.



Negotiates and advises on collective agreements



Creates political results  
(but we are not a political party)



Member service & counseling



Dialogue with authorities



Serving on Councils, Committees, and Boards



Advocacy and lobbying



Analyses, facts, knowledge, business policy, and opinions



Communicates knowledge and interpretation of legislation, etc.



Local associations



## GBA Member Companies Are Organized into 10 Industry Committees

Construction. Electricity, Plumbing & Heating. Mineral Exploration and Extraction. Fishing and Exports. Liberal Professions. Retail. Hotels, Restaurants & Tourism. IT, Communication & Media. Service & Transportation. Technical Advisors.

### Local Associations

All GBA's member companies are affiliated with a local association to represent the business communities in the regions fully.