

We don't just keep up with developments.
we help to create them!

The Greenland Business Association (GBA) is Greenland's dominant business and employer organisation. We represent the vast majority of companies, and around 80% of the country's business turnover. This secures a central position for GBA in the labour market, as well as in relation to the country's public authorities and political leadership.

GBA has all of Greenland as its workplace, with the clear goal of creating the best possible frameworks for the business community. That means that membership of GBA is the key to gaining influence over business development and direct access to a community of colleagues, which gives strength.

GBA acts as a knowledge centre with regard to the possibilities of the business community. GBA's secretariat is at your service with advice for member companies all year round – whether your questions concern minor, practical issues, or problems of a more demanding legal or financial nature.

GBA is a modern organisation with member services, lobbying and advice as its core services. Business development, seen from a societal perspective, is a high-priority focus area. GBA therefore organises courses, conferences and information work, as well as study trips and delegations to other countries.

GBA's vision and raison d'être

GBA's aim is to be a strong community and the guarantor of sustainable industrial development, new workplaces, good training and education possibilities, economic growth and welfare in Greenland. GBA takes a social responsibility, creates dialogue, acts and achieves results.

GBA is an initiator, placing businesses on the political agenda. GBA creates new knowledge, which is used to help member companies and to gain political influence. GBA takes responsibility for society.

Greenland's business community

Greenland is currently engaged in a rapid process of development which in the coming years will set a new agenda for the business community. In addition to the traditional businesses such as fishing, export industries, trade, service, IT, media, hotel and tourism, contractors, building and construction, transportation and consultancy, new activities such as mineral exploration and mining are also on the rise.

Climate change poses new challenges to Greenland and to the country's business community, and thus also provides new opportunities for development and growth.

GBA – at the forefront of change

The Greenland Business Association has been representing the interests of the business community in Greenland since 1966. Nearly 350 companies with around 7,000 employees, from all of the country's business sectors, are members of GBA – from small and medium-sized companies to large firms operating in the international markets.

The member companies of GBA are organised into ten industry committees: Construction craftsmen. Electricity, Plumbing & Heating. Mining. IT, Communication and Media. Liberal professions. Service and Transport. Hotel, Restaurant and Tourism. Fisheries and export industries. Technical consultants. Retail trade.



Greenland Business Association

P.O.BOX 73
Jens Kreutzmanipp Aqq 3.
3900 Nuuk - Greenland
+299 32 15 00
www.ge.ga.gl - ga@ga.gl



In brief

About the Greenland Business Association

Table with membership fee structure

A payroll-dependent subscription is paid on payrolls up to DKK 105.31 million until 31 December 2019, after which time it will be regulated according to the consumer price index.

GBA's national and international networks

GBA has a nationwide network that also includes partners from outside Greenland. This secures optimal and up-to-date service and advice for member companies.

GBA's partners in Denmark are Dansk Byggeri (the Danish Construction Association), Dansk Erhverv (the Danish Chamber of Commerce), Dansk Industri (the Confederation of Danish Industries), the Arctic Cluster of Raw Materials, Tekniq (the Danish Mechanical and Electrical Contractors' Association) and

HORESTA (the Danish Hotel, Restaurant and Tourism Association).

GBA is a member of the following international organisations and networks: the Prospectors & Developers Association of Canada (PDAC), which holds the world's largest annual trade fair for the mineral exploration and development industry, Offshore Centre Denmark, MSC Fisheries, which works to secure sustainable fishing, and the Greenlandic-Icelandic Chamber of Commerce.

CSR Greenland

CSR Greenland, which provides advice on corporate social responsibility and on implementing the UN's 17 goals for sustainable development, has its secretariat at GBA's headquarters in Nuuk.

Subscription structure April 1st 2019

Industry	Basic fee – quarterly (DKK)	Salary dependent fee: Above 1 mill. DKK – per year
Building workers *	1.500	0,5%
Electrical and plumbing **	1.500	0,5%
Mining*	1.500	0,5%
Technical consultants*	1.500	0,5%
Hotel, Restaurant and Tourism ***	1.500	0,5%
Liberal professions	1.500	0,5%
IT, Communication and Media	1.500	0,5%
Service and Transport	1.500	0,5%
Fisheries and export industries	1.500	0,5%
Retail trade	1.500	0,5%

* Optional membership of "Dansk Byggeri" (DK)

** Optinal membership of "Tekniq" (DK)

*** Mandatory membership of "HORESTA" (DK)

A payroll-dependent membership fee is paid on payrolls up to DKK 105.31 million until January 2020, after which time it will be regulated according to the consumer price index.

Associated membership

Per quarter 2.500 DKK

Greenland Business Association can record both domestic and foreign organizations and foreign companies to conditions laid down by the Board. These are recorded only as ancillary to the main association and have no voting rights at any election, polls, resolutions etc., in Greenland Business Association auspices.

The basic fee for domestic and foreign organizations and foreign companies is set at 2,500 DKK per. quarter. There shall be no salary dependent subscription.

Interest organisation

As an interest organisation, GBA functions by influencing the political system to create the best possible frameworks for business life.

GBA is represented on approximately 20 permanent councils, boards and committees under the Government of Greenland, and is consulted when the Government of Greenland is drawing up legislation.

Employers' organisation

As an employers' organisation, GBA helps to secure orderly relations in the labour market. This is done via a general collective agreement and four subsidiary agreements with the trade union SIK.

The agreements cover construction craftsmen, the commercial and office sector, the manufacturing sector, and transport and service industries.

GBA also has a collective agreement with the Financial Services Union in Denmark covering the banking industry in Greenland.

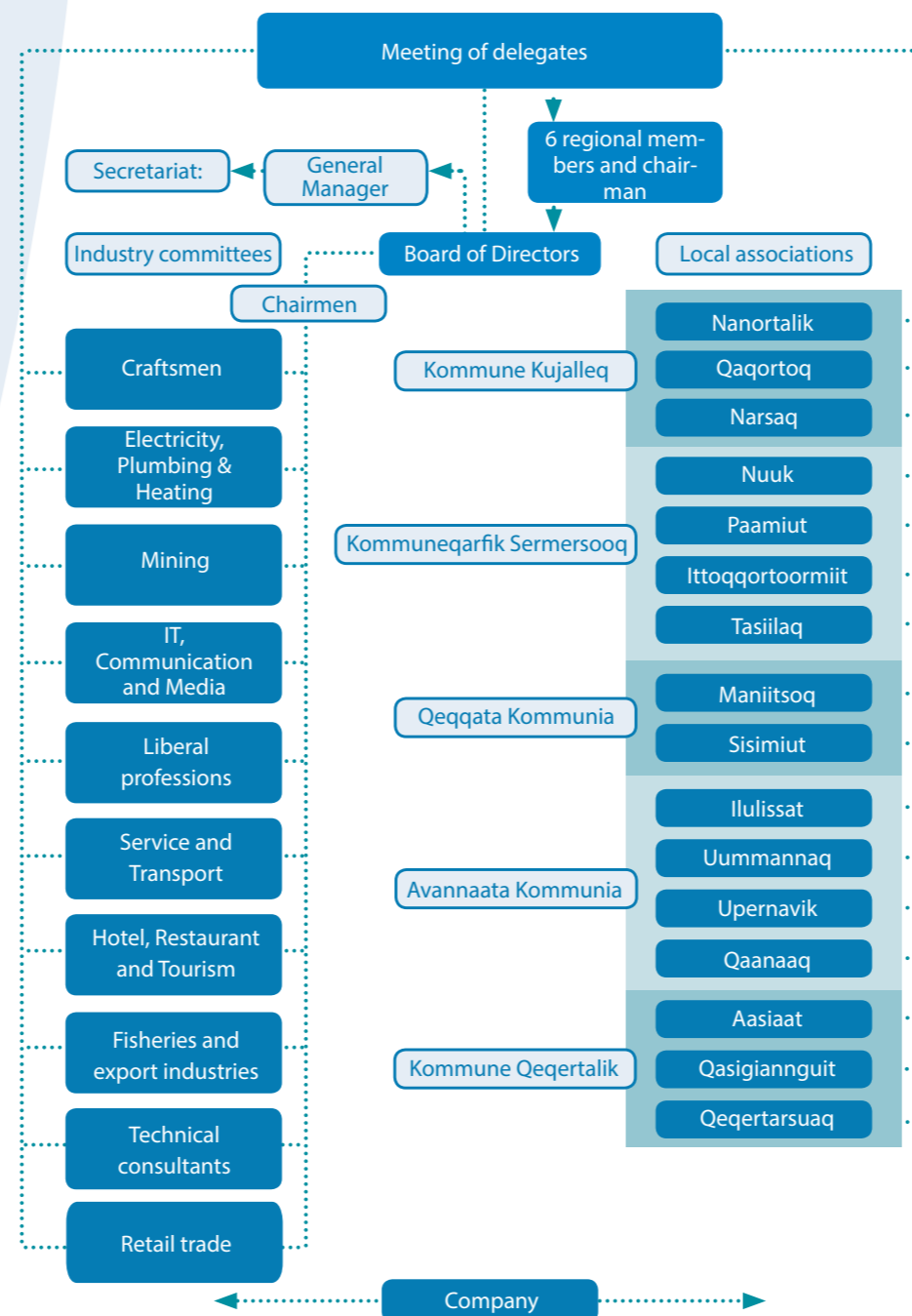
Active business development in new industrial areas

GBA has a duty to play an active role in relation to business development within both existing industries and new industries, such as mineral exploration and mining, and the production of Greenlandic foodstuffs.

GBA thereby works to collect and consolidate knowledge, and to establish networks and international contacts with experienced professionals and businesses. This is done in order to give Greenlandic companies the best possible preparation to meet future requirements.

Service organisation

As a service organisation, GBA provides legal and financial advice to its member companies, and compiles sector-oriented statistical information and guidance material for relevant legislation, as required.



GBA'S Four Focus Areas

Understanding gba in two minutes

The supreme authority of GBA is the delegate meeting, which is held every two years, in odd-numbered years. The delegation meeting elects six members to the board, who represent the member companies in the individual municipalities. The chairperson of GBA is elected at the delegate meeting. This means that the 17-member board is composed of the ten industry committee chairpersons, the six elected representatives from the municipalities, and the chair of the board. The board appoints GBA's director, who, together with the secretariat, handles the organisation's daily tasks.

Membership

Only companies that engage in business activity in Greenland are eligible for membership of GBA. Member companies pay a basic

membership fee and a payroll-dependent subscription.

Associated membership

Organisations and international companies who do not meet the requirements for ordinary membership can join GBA as associated members. The possibility of associated membership with GBA was introduced in 2011 to secure the strongest possible international network. Associated companies and organisations are solely affiliated with the main association, and do not possess voting rights in connection with elections, ballots, decisions, etc., under the auspices of GBA. Associated members pay a quarterly subscription of DKK 2,500. Associated members do not pay a payroll-dependent subscription.

Industries, local associations, networks

The member companies of GBA are affiliated with the organisation according to industry:

- Construction
- Mining
- Liberal professions
- Electricity, plumbing & heating
- IT, communication and media
- Service and transport
- Hotels, restaurants and tourism
- Fishing and export industries
- Technical consultants
- Retail trade

Each industry section is headed by an industry committee, consisting of five members elected by and from among the industry members. The industry committee chairperson is automatically a member of GBA's board.

Local associations

GBA's member companies are also affiliated with the organisation geographically, as GBA has local associations in most towns. This ensures representation for the interests of the local business community.